



LIFE Project Number  
<**LIFE13NAT/HU/000318**>

**Inception Report**  
Covering the project activities from **01/07/2014** to **31/03/2015**

Reporting Date  
<**31/03/2015**>

LIFE+ PROJECT NAME or Acronym  
<**RAPTORSPREYLIFE**>

Data Project

|                              |   |
|------------------------------|---|
| <b>Project location</b>      | Hungary and N-NW-Romania                          |
| <b>Project start date:</b>   | <01/07/2014>                                      |
| <b>Project end date:</b>     | <31/03/2015> <b>Extension date:</b> <dd/mm/yyyy > |
| <b>Total budget</b>          | € 2 881 243                                       |
| <b>EC contribution:</b>      | € 2 160 932                                       |
| <b>(%) of eligible costs</b> | 75,00   |

Data Beneficiary

|                         |  |
|-------------------------|--|
| <b>Name Beneficiary</b> | Fertő-Hanság National Park Directorate                         |
| <b>Contact person</b>   | Mr. József Fidlóczky   |
| <b>Postal address</b>   | Rév-Kócsagvár H-9435 Sarród                                    |
| <b>Telephone</b>        | +36-99-537620 + direct n°:+36-30-3495664                       |
| <b>Fax:</b>             | +36-99-537621 + direct n°                                      |
| <b>E-mail</b>           | <a href="mailto:fidlojo@gmail.com">fidlojo@gmail.com</a>       |
| <b>Project Website</b>  | <a href="http://www.sakerlife.mme.hu">www.sakerlife.mme.hu</a> |

## Table of contents

|  |    |
|--|----|
| 1. List of abbreviations.....  | 4  |
| 2. Executive summary.....  | 5  |
| 2.1. General progress.....   | 5  |
| 2.2. Assessment as to whether the project objectives and work plan are still viable.....   | 6  |
| 2.3. Problems encountered.....   | 6  |
| 2.3.1. <i>Background</i> .....   | 6  |
| 2.3.2. <i>Very long bureaucratic tender procedure in Hungary</i> .....   | 6  |
| 2.3.3. <i>Financial problem of the Romanian partner EPASM</i> .....  | 6  |
| 2.3.4. <i>All state organisations' dissemination must go through a newly set up state agency in Hungary</i> .....  | 6  |
| 2.3.5. <i>Measures taken to alleviate the effects of these problems</i> .....  | 6  |
| 3. Administrative part.....  | 7  |
| 3.1. Description of project management.....  | 7  |
| 3.1.1. <i>Initial technical meeting</i> .....  | 7  |
| 3.1.2. <i>Contracting project management</i> .....   | 7  |
| 3.1.3. <i>Project management activities</i> .....  | 7  |
| 3.2. Organigramme of the project team and the project management structure.....  | 8  |
| 3.2.1. <i>Organigramme of the project team</i> .....   | 8  |
| 3.2.2. <i>The project management structure</i> .....   | 9  |
| 3.3. Partnership agreements status (incl. date of signature) and key content.....  | 10 |
| 4. Technical part.....   | 11 |
| 4.1. Actions.....  | 11 |
| 4.1.1. Action A: Preparatory actions, elaboration of management plans and/or of action plans.....  | 11 |
| A1. <i>Baseline surveys of populations of target species for monitoring future trends and impacts of our actions</i> .....   | 11 |
| A2. <i>Evaluation of the genetic status of the fragmented populations of S. citellus</i> .....   | 12 |
| A3. <i>Survey of the stress status of S. citellus colonies and its use to develop S. citellus welfare plan</i> .....   | 12 |
| A4. <i>Set up the Land Stewardship Advisory Service</i> .....  | 13 |
| A5. <i>Preparing airport's grassland management guideline</i> .....  | 14 |
| A6. <i>Updating S. citellus Reintroduction Protocol</i> .....  | 15 |
| A7. <i>Evaluation of the water management system on S. citellus habitat and preparing recommendation how to improve it</i> .....   | 15 |
| A8. <i>Baseline survey of the public awareness</i> .....   | 16 |
| A9. <i>Acquisition of equipment (in compliance with public-procurement regulations)</i> .....  | 17 |
| 4.1.2. Action B. Purchase/lease of land and/or compensation payments for use rights.....   | 18 |
| B1. <i>Purchase of land</i> .....  | 18 |
| B2. <i>Lease of land</i> .....   | 19 |
| 4.1.3. Action C. Concrete conservation actions.....  | 21 |
| C1. <i>Establishing captive breeding program for S. citellus and gene bank from captive and natural colonies</i> .....   | 21 |
| C2. <i>Establishing veterinarian surveillance of potential food sources of A. heliaca and F. cherrug i.e. S.citellus, C. cricetus, N. superspecies leucodon and L.europeus</i> ..... | 21 |
| C3. <i>Improving the genetic status of target populations by planned introductions of animals of known allelic composition</i> .....   | 22 |
| C4. <i>Habitat reconstruction to improve the carrying capacity for prey species</i> .....  | 23 |

|   |    |
|---|----|
| C5. Reintroduction of <i>S. citellus</i> to reconstructed areas.....  | 24 |
| C6. Protection of short term survival and evaluation of long term success of reintroduced and natural prey populations.....   | 25 |
| C7. Encouraging hunters to catch predators the competitors of <i>A. heliaca</i> and <i>F. cherrug</i> around the habitat of <i>S. citellus</i> , <i>C. cricetus</i> , and <i>L. europeus</i> by distribution of traps for them..... | 25 |
| C8. Mapping the movements of <i>S. citellus</i> .....   | 26 |
| 4.1.4. Action D. Monitoring of the impact of the project actions (obligatory only if there are concrete conservation actions).....  | 27 |
| D1. Monitoring of the impact of the project actions by video record and photo traps in <i>A. heliaca</i> and <i>F. cherrug</i> nests.....   | 27 |
| D2. Monitoring of the impact of the project actions by satellite tagged adult birds.....  | 28 |
| D3. Monitoring of the project actions.....  | 28 |
| D4. Assessment of the social-economic impact.....   | 29 |
| D5. Assessment of ecosystem functions restoration.....  | 30 |
| 4.1.5. Action E. Public awareness and dissemination of results.....   | 31 |
| E1. Organising forums for stakeholders.....   | 31 |
| E2. Production and distribution information materials about the target species, their habitat requirement and management.....   | 31 |
| E3. Raising awareness measures to convince the water management bodies to protect habitats by nature friendly water management.....   | 32 |
| E4. Producing and displaying “Keep the dog closed” posters.....   | 32 |
| E5. <i>S. citellus</i> show (Introduction of the target species for the general public).....  | 33 |
| E6. Design and operate project web site.....  | 34 |
| E7. Erecting information signs at project site.....   | 34 |
| E8. Secure public support for conservation efforts.....   | 35 |
| E9. Informing media about project’s aims, activities and achievements.....  | 36 |
| E10. Layman’s report.....   | 37 |
| 4.1.6. Action F. Overall project operation and monitoring of the project progress.....  | 38 |
| F5. Networking.....   | 38 |
| 4.2. Availability of appropriate licences and authorisations (if relevant; as indicated in the proposal). .....   | 39 |
| 4.3. Envisaged progress until next report.....  | 39 |
| 4.3.1. Revised reporting schedule .....   | 39 |
| 4.3.2. Deliverables and milestones .....  | 40 |
| 4.3.3. Corrected time table illustrating progress .....   | 42 |
| 5. Financial part.....  | 44 |
| 5.1. Putting in place of the accounting system.....   | 44 |
| 5.2. Continued availability of co financing.....  | 44 |
| 5.3. Costs incurred.....  | 45 |
| 6. Annexes.....   | 51 |
| 6.1. Partnership agreements.....  | 51 |
| 6.2. Deliverables.....  | 51 |
| 6.3. Maps, drawings, technical designs, technical memos etc. as appropriate.....  | 51 |
| 6.4. Output indicators. Definition .....  | 52 |

## **1. List of abbreviations**

|        |   |
|--------|---|
| CAP    | Common Agriculture Policy                             |
| EC     | European Commission                                   |
| EPASM  | Environmental Protection Agency of Satu Mare County   |
| GIS    | Geographic Information System                         |
| GSM    | Global System for Mobile                              |
| HQ     | Headquarter   |
| KNPD   | Kiskunság National Park Directorate                   |
| MAVIR  | Hungarian Transmission System Operator Company Ltd.   |
| MILVUS | „Milvus Group” Association                            |
| MME    | BirdLife Hungary                                      |
| MoA    | Ministry of Agriculture                               |
| NGO    | Non-governmental Organisations                        |
| NHM    | Natural History Museum                                |
| NW     | North West  |
| PA     | Partnership Agreement                                 |
| PTT    | Platform Transmitter Terminals                        |
| RD     | Rural Development                                     |
| RDP    | Rural Development Program                             |
| RMEWF  | The Romanian Ministry of Environment Water and Forest |
| SC     | Steering Committee                                    |
| SPA    | Special Protected Area                                |
| ToR    | Terms of Reference                                    |

## 2. Executive summary (max 3 pages)

### 2.1. General progress.

The start and work of the project was hampered seriously by Hungarian administrative difficulties i.e. very slow and long tender process, very slow process to enquiring permissions from national authorities. Finally the Coordinating Beneficiary speed up the work by reorganization of the project management structure (see 4.2. points below).

#### **Summary of progress during reporting period:**

##### ***Administrative part:***

- Project management is in recruited and start to work (F1).
- First Steering Committee Meeting was held (F2).
- Project Hand-book were prepared electronically for each associated beneficiary and introduced to them during a two days project training (F3)
- An independent financial audit was selected and contracting in progress (F4).

##### ***Technical Part:***

- Guidelines for the baseline surveys have been prepared. The survey method tested for *C. cricetus* and presented (A1).
- The guideline for sample collection has been prepared. List of Potential colonies are prepared (A2, A3).
- The manual for the Land Stewardship Advisory was prepared and included in the Project Handbook. It was introduced on the training of project participants. In Romania the known *S. citellus* habitats were listed which is a necessary base of the development of the "Best Management Guideline" (A4).
- A protocol was prepared for airport management guideline preparation (A5).
- Reintroduction Protocol for *S. citellus* repatriation based on the latest developments was up dated (A6).
- The protocol for the evaluation of the water management system on *S. citellus* habitat in favour of the *S. citellus* was prepared. Project areas were assessed against flood danger (A7).
- The first, test version of the questionnaire for baseline survey of public awareness was developed (A8).
- Procurement of equipments has started. 4WD car of BEKE (50% charged to the project) was purchased. (A9).
- The proposed areas for procurement were checked against flood danger and the purchase plan has modified according to it. Procurement has prepared (B1).
- 30 ha for land management on stepping stones were contracted (B2=C4).
- The guideline for video- and photo-trapping was developed and was included in the Project Handbook. Pictures are continuously recorded for later evaluation. On-line video streaming is presented on the website of the project (D1).
- The guideline for satellite tagging of adult birds was developed and was included in the Project Handbook. Procurement of PTT have started (D2).
- 5 guidelines of the monitoring methodology of the target species were prepared and were included in the Project Handbook (D3).
- The website of the project has been launched by 10/3/2015 and the *F. cherrug* breeding can be monitored there continuously (E6).
- The design of the draft layout has been prepared (E7).
- Press Release was issued and Press Conference was organised to introduce the project (E9).
- Project was introduced in conferences (F5).

## **2.2. Assessment as to whether the project objectives and work plan are still viable.**

Despite of the difficulties effected the project implementation during the reporting period the project objectives and work plan are still viable.

There is an experienced project management team, and an enthusiastic project team. Most of the partners have experience in LIFE project. There is a good co-operation among the project partners and the management team. Partners used all possible solution and all effort to alleviate the difficulties created by the Hungarian administrative problems. There are some minor delays which won't risk the achievement of project objectives since the effecting problems are solved.

## **2.3. Problems encountered.**

### **2.3.1. Background**

The project aimed to follow the management structure of the successfully and smoothly implemented large LIFE09 NAT/HU/000384 project. However in the main time the bureaucracy has further increased in Hungary what has very much affected the project immediately from the beginning.

### **2.3.2. Very long bureaucratic tender procedure in Hungary**

The tender procedure became very long and bureaucratic what hamper the effective start of the project (See under 4. bellow). An external assistance company to the MoA had to approve the tender documents.

### **2.3.3. Financial problem of the Romanian partner EPASM**

The Romanian Ministry of Environment Water and Forest (RMEWF) did not provided budget for EPASM due to some technical problem. Therefore EPASM has not any own contribution to the project yet (**Annex 3.3.3.**)

### **2.3.4. All state organisations' dissemination must go through a newly set up state agency in Hungary**

It slow down terribly the dissemination and the project priorities may lose in the process.

### **2.3.5. Measure taken to alleviate the effects of this problem**

- The coordinating beneficiary decided to employ a Project Technical Coordinator and the Project Administrator directly and just selected an external Project Manager by tender since the Coordinating Beneficiary has not any experience and capacity in large project management.
- The dissemination activities were transferred from the Coordination Beneficiary to the Associated Beneficiary NIMFEA which is an NGO and its dissemination activities are not channelled to the state agency.
- The director of EPASM had a meeting in the RMEWF, where she was promised that the financial problem would be solved during April Measures may be needed from EC  
EC may draw to the attention of RMEWF of their responsibility for the project implementation since it has signed A8 declaration if the problem would not be solved in April.

The project is a little bit behind schedule due to these problems but this would not hamper the project work seriously.

### **3. Administrative part**

#### **3.1. Description of project management**

##### **3.1.1. Initial technical meeting**

The Coordinating Beneficiary invited the Associated Beneficiaries for a technical preparation meeting on 12. 09.2014. The meeting was held in the Budapest Zoo. (**Annex F1/1**).

##### **3.1.2. Contracting Project Management**

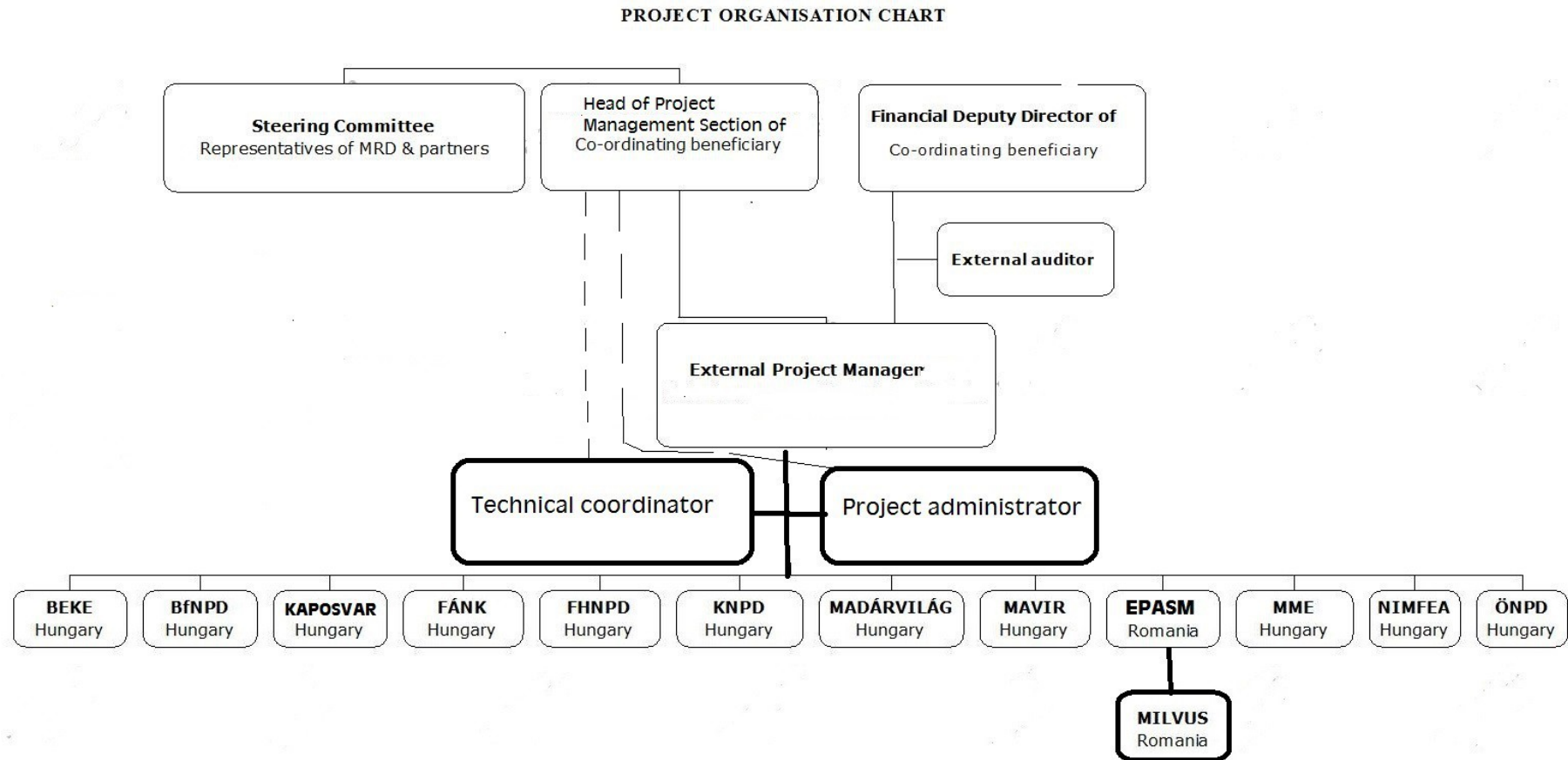
- Coordinating Beneficiary employed the Project Technical Coordinator and the Project Administrator from 01.11. 2014. to speed up the work.
- This speed up the tender process also for the Project Manager who was contracted 12.12.2014.

##### **3.1.3. Project management activities**

- Partner co-ordinators were appointed by all partner organisations in September 2014.
- Detailed work plan and budget of all partners were divided for years and in 2015 for months and included in the Project Hand-book.
- The Technical Coordinator took part on the Kick of Meeting in Budapest on 11 November 2015 (**Annex F1/2**).
- Project Hand-book were prepared electronically for each project partners and introduced during the project training (**Annex F3/1**).
- Two days project training was organised in Királyrét in Hungary on 10-11 February 2015, where partners' team took part to learn about the technical, administrative and financial issues of the project implementation (**Annex F3/2**).
- Partnership Agreements and Financial Amendments were prepared and signed (See in 4.3. below).
- The external auditor was selected and contracting in progress (**Annex F4/1**).
- Steering Committee was established and the first meeting was held on 19 March. 2015 (**Annexes F2/1-F2/7**).
- Project Manager announced the project in a press conference together with the announcement of *Spermophilus citellus* as “the Mammal of the Year” in the Museum of Natural History on 27 March (**Annexes E9/1-E9/7**).
- The Project Manager, the Technical Coordinator and the Project Administrator visited the project partners to assist them in the project start and follow up the work progress.
- Regular electronic communications (by emails and telephones) are going on between the project manager and administrator and the partner co-ordinators.
- Partners are submitting monthly progress and financial reports.

### 3.2. Organigramme of the project team and the project management structure

#### 3.2.1. Organigramme of the project





### 3.2.2. Project management structure

According to the new project management structure the project is managed by an external Project Manager who was selected by tender. The Project Manager has two assistants, a Technical Coordinator and a Project Administrator who are employed by the Coordinating Beneficiary specifically for the project work and for the project duration.

#### *The Project Manager's tasks:*

##### Administration

1. Establish and get to maintain the administration system necessary for running the LIFE+ Project, particularly the reporting systems.
2. Ensure that proper accounting and financial reporting system established and maintained what is necessary for running the LIFE+ Project, and monitoring of budget.
3. Ensure that purchase of goods and services fully comply with the Hungarian and EU regulations.
4. Inform and advise the project Steering Committee on project progress. Prepare reports for the project Steering Committee.
5. Prepare reports for the European Commission.
6. Ensure good communication between different partner organisations.

##### Co-ordination

7. To deliver the project according to contractual terms or its amended variation approved by the European Commission, by planning and progressing the project tasks using suitable project management and monitoring techniques as necessary and appropriate. The Project Manager is expected to be fully aware of all deliverables, timing & resourcing; ensuring that they are implemented or a formal agreement is made with the European Commission for a contractual change.
8. To ensure that suitable budgeting and resource planning is set up within each and all beneficiaries for the duration of the Project.
9. Provide training for Beneficiaries' staff involved in the project's implementation.

##### Production of Project Handbook

10. Prepare a Project Handbook for Project staff and other key people to set quality standard and ensure consistency across the Project.

##### Public Affairs and Communication

11. Ensure that all dissemination tasks specified within the application document are completed.
12. Respond to queries about the LIFE+ Project from press, media and general public as well as other similar projects.

#### *Technical Coordinators' Tasks:*

1. Assist the Project Manager in the management of all technical issues.
2. Coordinate the preparation of the technical guidelines of the Project Handbooks.
3. Assist the Project Manager in the training of project staff.
4. Prepare the Steering Committee meetings.
5. Coordinate the annual work planning of the beneficiaries.
6. To co-ordinate the Project Team to carry out project tasks as required, ensuring that they are aware of their roles, tasks and responsibilities within the team and they have a suitable overview of the whole project.
7. Follow up the implementation of the work plans.
8. Ensure that project web site set up and functioning properly.
9. Promote awareness of the aims, activities and results of the LIFE+ Project.

10. Ensure that project staff, project beneficiaries and all other interested parties kept informed of project progress.

*Project Administrator's tasks:* did not change comparing to the originally planned.

### **3.3. Partnership agreements status (incl. date of signature) and key content**

Partnership agreements were prepared according the “LIFE+ Guidelines for Partnership Agreements” and were signed on 09.01.2015. (**Annexes 7.1/1-7.1/12**).

A Modification was signed with NIMFEA due to transferred dissemination work and costs (**Annex 7.1/13**).

Financial Amendments were signed with the Associated Beneficiaries as soon as the 2015 years budgets were approved (**Annexes 7.1/14-7.1/18**).

#### 4. Technical part

Both *A. heliaca* and *F. cherrug* population is increasing in the Carpathian basin thanks to the conservation effort of the last decades and the valuable European Union' support in the last decade. While these endangered bird species populations are increasing their important food sources the small mammals like *S. citellus* and *C. cricetus* are decreasing. Our aim is to understand the present condition of these species and do all effort to stop this decrease.

##### 4.1. Actions

##### 4.1.1 Action A: Preparatory actions, elaboration of management plans and/or of action plans

###### Action A1:

**Name of the action:** Baseline surveys of populations of target species for monitoring future trends and impacts of our actions

**Proposed start and end of the action:** October 2014-Sept 2015

**Expected results:** With these data, it will be possible to exactly identify the threats that local populations or colonies are facing, and these threats will be addressed through specific conservation measures.\_

###### Achievements:

- Guidelines for the baseline surveys have been prepared
- Survey method tested and presented

**Action status:** ongoing

| Measure                        | Deadline   | Progress |
|--------------------------------|------------|----------|
| • Baseline survey accomplished | 30.06.2015 | ongoing  |
| • Habitat suitability analysis | 30.07.2015 | pending  |
| • Trend analysis               | 30.07.2015 | pending  |

###### **Description of the progress during the reporting time:**

Guidelines for the baseline surveys have been prepared and included in the Project Handbook (**Annex F3/1**). *A. heliaca* and *F. cherrug* breeding pairs' survey along the project area has started. BEKE tested *C. cricetus* survey and presented the first result in a conference (**Annex A1/1**).

###### **Problems and their impacts:**

No

###### **Modifications:**

BEKE would prefer to use ear tag to mark *C. cricetus* leaving inside the villages during the baseline survey. *C. cricetus* usually are poisoned inside the villages. BEKE wants to catch these *C. cricetus* and take them to an *A. heliacal* eyrie as a food source of the bird. By the ear tag they want to monitor the efficiency of this kind of action. About 500 ear tags may cost about 130 €.

### **Action A2:**

**Name of the action:** Evaluation of the genetic status of the fragmented populations of *S. citellus*

**Proposed start and end of the action:** October 2014 – December 2015

**Expected results:** We will obtain a general knowledge of the genetic status of the *S. citellus* populations. This includes the assessment of heterozygosity as a measure of viability and the determination of the loss of genetic diversity due to isolation. Molecular methods can also be used to monitor the genetic status of repatriated populations to prevent bottlenecks. Such knowledge will be used to restore the genetic heterogeneity of the fragmented populations by planned reintroductions to increase the size and viability of target populations. The result of such analysis help us identifying and protecting populations that serve as a source for future colonisations and relocations, and to assess the potential risk of local extinctions. Describing the spatial and demographic structure of the populations will enable us to select the optimal strategy for *S. citellus* management in the following years.

### **Achievements:**

- The guideline for sample collection has been prepared.
- List of Potential colonies are prepared.

**Action status:** ongoing

| <b>Measure</b>              | <b>Deadline</b> | <b>Progress</b> |
|-----------------------------|-----------------|-----------------|
| • Genetic sample collection | 30.04.2016      | ongoing         |
| • sequencing                | 30.10.2016      | pending         |
| • evaluation and reporting  | 31.12.2016      | pending         |

### **Description of the progress during the reporting time:**

**In Hungary:** The guideline for sample collection has been prepared and included in the Project Handbook (**Annex F3/1**). List of Potential colonies are prepared (**Annex A2/1**). Procurements of traps initiated. Sequencing methodologies studied and a meeting is prepared to select the best method for the project.

### **Problems and their impacts:**

### **Modifications:**

**In Romania:** Because of the delay in the trapping permit request and the foreseen delay in obtaining the permit (based on experiences from the project LIFE09NAT/HU/000384), as well as due to insufficient knowledge on the status of colonies before completion of action A1, a prolongation of the activity with one year is desired.

### **Action A3:**

**Name of the action:** Survey of the stress status of *S. citellus* colonies and its use to develop *S. citellus* welfare plan

**Proposed start and end of the action:** October 2014 – December 2015

**Expected results:** Describing the physiological status of animals helps us predicting the future diseases and and thus preventing the lethal events leading to population decrease. As stress

responsiveness plays a key role in allowing animals to cope with environmental challenges, measurement of glucocorticoid levels can give insight into an animal's well-being and can aid us solving conservation and management issues. We will prepare a suslik habitat management guideline summarizing the optimal conditions corresponding to minimal stress levels.

**Achievements:**

- The guideline for sample collection has been prepared.
- List of Potential colonies are prepared

**Action status:** ongoing

| Measure  | Deadline                  | Progress           |
|--|---------------------------|--------------------|
| <ul style="list-style-type: none"> <li>• Sample collection</li> <li>• <i>S. citellus</i> welfare plan</li> </ul> | 30.11.2015<br>31.12.2015. | ongoing<br>pending |

**Description of the progress during the reporting time:**

The sample collection of this action will be done together with the A2 action. The guideline for sample collection has been prepared and included in the Project Handbook (**Annex F3/1**). List of Potential colonies are prepared (**Annex A2/1**). Procurements of traps initiated. Sequencing methodologies studied and a meeting is prepared to select the best method for the project.

**Problems and their impacts:**

**Modifications:**

In Romania: Because of the delay in the trapping permit request and the foreseen delay in obtaining the permit (based on experiences from the project LIFE09NAT/HU/000384), as well as due to insufficient knowledge on the status of colonies before completion of action A1, a prolongation of the activity with one year is desired.

**Action A4:**

**Name of the action:** Set up the Land Stewardship Advisory Service

**Proposed start and end of the action:** October 2014 – March 2015

**Expected results:** Land Stewardship Advisory Service established in the project areas that would provide regular advice for the farmers and hunters on the target species.

**Achievements:** The manual for the Land Stewardship Advisory was prepared and included in the Project Handbook. It was introduced on the training of project participants on 10/2/2015

**Action status:** ongoing

| Measure  | Deadline                   | Progress           |
|--|----------------------------|--------------------|
| <ul style="list-style-type: none"> <li>• LSAS established</li> <li>• Romanian best management guideline</li> </ul> | 28.02.2014.<br>28.02.2014. | delayed<br>delayed |

**Description of the progress during the reporting time:**

**In Hungary:**

The manual of the Land Stewardship Advisory Service was developed and included in the Project Handbook (**Annex F3/1**). It was introduced at the training of project participants (F3) at 10/2/2014. The partner coordinators currently are selecting the advisors in their area who have close contacts with the farmers in the project sites. It is foreseen that the Service will be on duty at the end of April. Training will be organized for the members in November about the project's requirements on land use.

**In Romania:**

The known *S. citellus* habitats were listed which is a necessary base of the development of the "Best Management Guideline" and the informing and warning of farmers and agricultural companies regarding the importance of the protection of the ground squirrels happened in 3/2015.

**Problems and their impacts:**

**In Hungary:** none

**In Romania:** none

**Modifications:**

No modification is necessary

**Action A5:**

**Name of the action:** Preparing airport's grassland management guideline

**Proposed start and end of the action:** October 2014 – June 2015

**Expected results:** An airport management guideline what would enable the airport managers to manage the airport grassland to satisfy the air and *S. citellus* safety requirements in the same time.

**Achievements:** A protocol was prepared and included in the Project Handbook.

**Action status:** ongoing

| <b>Measure</b>   | <b>Deadline</b> | <b>Progress</b> |
|--|-----------------|-----------------|
| • Survey completed and data management guidelines ready        | 31.12.2015.     | ongoing         |
| • workshop organised   | 28.02.2016.     | pending         |
| • 200 copies of adjusted airport management guideline prepared | 31.03.2016      | pending         |

**Description of the progress during the reporting time:**

The contacting of airport management personnel is in progress to start studying the implemented management practices.

**Problems and their impacts:**

None

**Modifications:**

None

**Action A6:**

**Name of the action:** Updating *S. citellus* Reintroduction Protocol

**Proposed start and end of the action:** July 2014 – December 2014

**Expected results:** An up to date digital Reintroduction Protocol for *S. citellus* repatriation based on the latest developments.

**Achievements:** An up to date digital Reintroduction Protocol for *S. citellus* repatriation based on the latest developments was developed 15.2.2015.

**Action status:** completed

| Measure                              | Deadline   | Progress  |
|--------------------------------------|------------|-----------|
| • Up to date Reintroduction Protocol | 31.12.2014 | completed |

**Description of the progress during the reporting time:**

The *S. citellus* reintroduction protocol was updated (**Annex A6/1**), was discussed during the training of project participants (F3) and was finalized accordingly. In order to summarize all experiences gained during the implementation of the reintroduction the protocol might further be updated in case it is found reasonable.

**Problems and their impacts:**

None

**Modifications:**

None

**Action A7:**

**Name of the action:** Evaluation of the water management system on *S. citellus* habitat and preparing recommendation how to improve it.

**Proposed start and end of the action:** July 2014 – December 2016

**Expected results:** Mortality due to flood will be reduced and repatriation would not be done on area endangered by flood.

**Achievements:**

- The protocol for the evaluation of the water management system on *S. citellus* habitat in favour of the *S. citellus* was prepared
- Project areas were assessed against flood danger

**Action status:** ongoing

| Measure   | Deadline    | Progress |
|---|-------------|----------|
| <ul style="list-style-type: none"><li>Identifying the potential risk of flood on the <i>S. citellus</i> habitat</li></ul>                           | 31.12.2015. | ongoing  |
| <ul style="list-style-type: none"><li>Recommendations for Water Authority for the required water management on <i>S. citellus</i> habitat</li></ul> | 31.12.2016. | pending  |

**Description of the progress during the reporting time:**

The protocol for the evaluation of the water management system on *S. citellus* habitat in favour of the *S. citellus* was prepared and included in the Project Handbook by 8/12/2014.

The project areas were assessed first according to it and it was realised that many of the selected project sites are located on potential flood plain therefore it was recommended to replace them (**Annex A7/1**). Details are given in C4. and C5.

**Problems and their impacts:**

None

**Modifications:**

None

**Action A8:**

**Name of the action:** Baseline survey of the public awareness

**Proposed start and end of the action:** July 2014 – December 2015

**Expected results:** Through the survey we will be able to maximise the effects of our program, and PR-campaign.

**Achievements:** The first test version of the questionnaire was developed.

**Action status:** ongoing

| Measure   | Deadline    | Progress  |
|---|-------------|-----------|
| <ul style="list-style-type: none"><li>Questionnaire</li></ul>             | 31.12.2014. | completed |
| <ul style="list-style-type: none"><li>Data collection completed</li></ul> | 31.03.2015. | delayed   |
| <ul style="list-style-type: none"><li>Data processing ready</li></ul>     | 01.12.2015  | pending   |

**Description of the progress during the reporting time:**

The development of the questionnaire is coordinated by MME. A subcontractor was selected and the first sets of the questionnaires were developed by 30/3/2015 (**Annex A8/1**). The questionnaire will be in testing-phase for one month and after this initial phase it will be revised and finalized according to the conclusions of the tests.

**Problems and their impacts:**

None

**Modifications:**

None



**Action A9:**

**Name of the action:** Acquisition of equipment (in compliance with public-procurement regulations)

**Proposed start and end of the action:** July 2014 – March 2015

**Expected results:** Cost efficient procurement.

**//Achievements:** 4WD car of BEKE (50% charged to the project) was purchased.

**Action status:** ongoing

| Measure   | Deadline   | Progress |
|---|------------|----------|
| <ul style="list-style-type: none"><li>• Tender process complete</li></ul>             | 31.12.2014 | delayed  |
| <ul style="list-style-type: none"><li>• Multifunctional equipment purchased</li></ul> | 28.02.2015 | delayed  |

**Description of the progress during the reporting time:**

**In Hungary:**

The 4WD car of BEKE (50% charged to the project) was purchased by 30/3/2015.

The acquisition of the following equipments is in progress (offers received from supplier and the best being selected): the digital photo camera and field data collector at FHNPI

**In Romania:**

The acquisition of the following equipments is in progress (offers received from supplier and the best being selected): 4WD car, GPS, binocular, telescope, mower at MILVUS

**Problems and their impacts:**

**In Hungary:**

In the case of MME 25.862 € was budgeted for the purchase of a new car considering the income from selling an old car. However in the main time an old car of MME was completely broken down.

**In Romania:**

In the case of Environmental Protection Agency of Satu Mare (EPASM) 50% of a car's cost were budgeted. However due to the strict regulation of the Romanian Government state agencies cannot buy an additional car. Therefore they cannot use state money to cover the other 50%-t of the car outside of the project only in case they cover the total cost of the car of project money. Without this car the project activities cannot be managed since the agency has only 3 cars that would be needed for their daily work.

**Modifications:**

Due to the necessary changed in the management structure of the project (change from externalized to personnel and externalized sources a car and two notebooks would be needed for the two employees (Technical Coordinator and Project Administrator). FHNPD would like to use about 15.600 € for the car and about 2.000 € for the notebooks from the spared VAT.

Due to the problem mention at MME it would be necessary to buy a new Land Rower for the project that would cost about 35.000 €.

Due to the problem mentioned at EPASM a second hand car would be purchased for 6.500 € from the project budget what they would use only for the project work during the project duration.

#### 4.1.2. Action B. Purchase/lease of land and/or compensation payments for use rights

##### Action B1:

Name of the action: Purchase of land

Proposed start and end of the action: July 2014 – March 2016

Expected results: 58,6 ha grassland will be owned by the state and managed by the KNPD. It will serve for rehabilitation and sustainable management as a potential habitat for *S. citellus* repatriation and for feeding ground for *A. heliaca* and *F. cherrug*. Another 10 abandoned farmlands about 2 ha will be purchased in HUKM20014.

Achievements: The proposed areas were checked against flood danger and the purchase plan has modified according to it. Procurement has prepared.

Action status: ongoing

| Measure  | Deadline    | Progress |
|--|-------------|----------|
| <ul style="list-style-type: none"> <li>58,6 ha grassland purchased</li> <li>2 ha farmhouse land</li> </ul> | 31.01.2016  | ongoing  |
|  | 31.01.2016. | pending  |

##### Description of the progress during the reporting time:

The target areas were checked also in the frame of A7 action and Öttömös found flood safe. KNPD was negotiated with the land owners and basically has agreed. They have initiated the procurement process. It is foreseen that the procurement would be completed latest until the end of May.

##### Problems and their impacts:

The target areas were checked also in the frame of A7 action and it was found that the smaller area Kelebia 0169/1 (6,6 ha) is unsuitable for *S. citellus* because it is a very low area along a small creek and the rainwater is naturally gravitating to this area. In very rainy years the rainwater and the creek may flood the area what may kill the *S. citellus*.

##### Modifications:

KNPD prefer to purchase land only in Öttömös but altogether more than it was originally planned. In the main time the land registration numbers have been changed due to some reorganisation of the ownership. (See Table 1 bellow.)

| Settlement   | Old land register numbers | New land register numbers | Total area in ha | area for purchase ha | price in HUF    | Protected Natura 2000: | Reference                | Source          |
|--------------|---------------------------|---------------------------|------------------|----------------------|-----------------|------------------------|--------------------------|-----------------|
| Öttömös      | 0100/35                   | 0100/59                   | 37,9765          | 37,75                | 41525000        | X                      | Annexes B1/1-B1/4        | LIFE            |
| Öttömös      | 0100/43                   | 0100/85                   | 68,2064          | 35,25                | 31725000        | X                      | Annexes B1/1 & B1/4-B1/5 | Life, MoA, KNPD |
| <b>Total</b> | <b>area:</b>              |                           | <b>106,1829</b>  | <b>73</b>            | <b>73250000</b> | X                      |                          |                 |

229 804 €

In the new reorganised set up it is important to purchase this quantity to have the majority role in these joint ownership areas. The original budget would be enough for these lands.

**Action B2:**

**Name of the action:** Lease of land

**Proposed start and end of the action:** October 2014 – December 2018

**Expected results:** 50 ha leased. Natura 2000 sites will be connected. The *S. citellus*, *C. cricetus* and *L. europeus* populations will be strengthened and spread over the area what would serve food source for the increasing *A. heliaca* and *F.cherrug* population and may reduce the pressure on other game species. It will reduce the conflict between hunters and nature conservationist.

**Achievements:** 30 ha contracted

**Action status:** modified

| Measure                         | Deadline    | Progress |
|---------------------------------|-------------|----------|
| • First contract                | 31.12.2014  | delayed  |
| • Cutting grass                 | 31.01.2016. | pending  |
| • Planting Alfa alfa by farmers | 01.08.2015  | pending  |
| • Signing new contracts         | 01.01.2016  | pending  |

**Description of the progress during the reporting time:**

We were working hard to be able to overcome on the difficulties what the new legislation created for us (see bellow). Finally we developed a contract form for external assistance and a Proof form. The land owners were approached and the land management contracts with 6 owners for 20 pieces of land and for 30 ha signed. (Annex B2/1).

**Problems and their impacts:**

Due to recent unexpected changes in the legislation we are facing some difficulties at the implementation of action B2 Lease of land that aims to establish strips of bounds on the leased areas. According to the Art. 25-26 and 39 of the new Land Law that came in effect by 1<sup>st</sup> January 2014 the official procedure of handing over arable land by selling and buying and also by leasing or /by other types of solutions for use became more complicated, given that every contracting and also every intent of contracting of this type has to be evaluated by the local land committees, which indeed has still not yet been established until now. Until these committees start to work – the date of this is still unknown – the local Chambers of Agriculture are entitled for realizing the procedure. But still the rules for land lease are so strict that there could be several (around 3-6 months) of delay in the administration.

The additional problem is that in 2014 the regional bodies of the government launched inspections at Győr-Moson-Sopron County regarding unusually high fees paid for land lease at new contracts. This has resulted in putting in focus all land related contracting.

**Modifications:**

Considering the above mentioned reasons, in order to avoid any kind of difficulties but most of all significant delays, we would like to realize the work planned in action ‘B2 Lease of land‘ in the frames of action ‘ C4 Habitat reconstruction‘, where assignment contracts would be made with the land owners defining the activities to be implemented at the areas subject of the contract. The implemented activities would be paid as an assignment fee for the farmer from the external

assistance costs. In practice the technical implementation and the objective would remain the same, only the way of financing would change.

### 4.1.3. Action C. Concrete conservation actions

#### **Action C1:**

**Name of the action:** Establishing captive breeding program for *S. citellus* and gene bank from captive and natural colonies

**Proposed start and end of the action:** January 2016 – December 2018

**Expected results:** We establish the methodology of keeping and breeding *S. citellus* individuals in captivity. Such methodology will be transferred to keep the animals in the Education Centre (Action E5) and show the tame individuals to the public there. We expect to produce 50 captive bred animals by the end of the project. Captive bred and tamed animals will be used by FÁNK and NIMFEA to exhibit animals without capturing new individuals from the wild.

**Achievements:** Location of the captive breeding of *S. citellus* was selected within the university premises.

**Action status:** ongoing

| Measure  | Deadline    | Progress |
|--|-------------|----------|
| • Facilities and breeding conditions establishment | 31.12.2015  | ongoing  |
| • Captive breeding technology developed            | 31.12.2016  | pending  |
| • 50 individuals produced in captivity             | 31.12.2018. | pending  |

#### **Description of the progress during the reporting time:**

Location of the captive breeding of *S. citellus* was selected within the university premises. The university started some site preparation outside of the project. Procurement of necessary materials and equipments (cages, runs, etc.) started.

#### **Problems and their impacts:**

No

#### **Modifications:**

No

#### **Action C2:**

**Name of the action:** Establishing veterinarian surveillance of potential food sources of *A. heliaca* and *F. cherrug* i.e. *S. citellus*, *C. cricetus*, *N. superspecies leucodon* and *L. europeus*

**Proposed start and end of the action:** October 2014 – December 2016

**Expected results:** Veterinarian surveillance of potential food sources of *A. heliaca* and *F. cherrug* is established.

**Achievements:** Guideline for sample collectors has prepared and included in the Project Handbook

**Action status:** ongoing.

| Measure  | Deadline   | Progress  |
|--|------------|-----------|
| • Guideline for sample collectors              | 31.01.2015 | completed |
| • Training for sample collectors               | 28.02.2015 | completed |
| • Functioning veterinarian surveillance system | 31.12.2016 | pending   |

**Description of the progress during the reporting time:**

Guideline for sample collectors has prepared and included in the Project Handbook (**Annex F3/1**)  
In the frame of the project training the sample collection was introduced.

**Problems and their impacts:**

No

**Modifications:**

Not any.

**Action C3:**

**Name of the action:** Improving the genetic status of target populations by planned introductions of animals of known allelic composition

**Proposed start and end of the action:** January 2016 – September 2018

**Expected results:** 10 *S. citellus* colonies genetic status will be improved and higher overall genetic variance and viability of the populations.

**Achievements:** Only from 2016

**Action status:** pending

| Measure  | Deadline   | Progress |
|--|------------|----------|
| • Source population of high genetic variability selected | 31.12.2015 | pending  |
| • performing the translocation of 10x50 individuals      | 31.05.2016 | pending  |

**Description of the progress during the reporting time:**

Only from 2016

**Problems and their impacts:**

No

**Modifications:**

No

#### Action C4:

**Name of the action:** Habitat reconstruction to improve the carrying capacity for prey species

**Proposed start and end of the action:** January 2015 – June 2017

**Expected results:** The potential future hunting areas of *A. heliaca* and *F. cherrug* will be converted to suitable habitat for prey species including those 58,6 ha, what is purchased in the frame of the project. Total area and carrying capacity of grasslands for *S. citellus* and *L. europeus* will increase in the purchased areas. The grassland composition will be more natural dominated by plant species preferred by *S. citellus*. 2 ha suitable habitat for *C. cricetus* and *L. europeus* on the reconstructed abandoned farmhouses' lands and 100 ha bounds along dirt roads in the Great Plain area. Another 70 ha will be reconstructed in FHNP area. Removal of invasive allergenic plants like ragweed would reduce health problems of local people. The current trend of the small mammals' population decline will be prevented by our specific actions. The decline will slow down and hopefully stop after five years. We expect about 10% increase after a 10 years period. The proportion of small mammals among the preys of the increasing *A. heliaca* and *F. cherrug* would not be further reduced what would reduce the conflict with hunters. In case of *S. citellus* based on previous similar actions when half of the introduced animals survived and integrated to the local population, we expect similar outcome after the planned action. Therefore it is foreseen that about in 28 locations which were inhabited sometimes in the past the *S. citellus* population will be restored. In case of *S. subtilis trizona* it is foreseen that the known 20 ha habitat will be doubled or it will be justified that there is not any other localities in Hungary. The existing and potential habitats will be properly maintained without any conflict with *S. citellus* interest. In case of *C. cricetus* we expect better information about the size of the existing population

#### Achievements:

**Action status:** ongoing

| Measure                | Deadline    | Progress |
|------------------------|-------------|----------|
| • 200 ha reconstructed | 01.04.2017. | pending  |

#### **Description of the progress during the reporting time:**

The sites for habitat reconstruction were checked and some sites needs to be changed. (See in modification bellow.) Land use contracts were signed with land owners (See Action B1.)

#### **Problems and their impacts:**

1. Land purchase changes in KNPD area in HUKN10008 needs changes in rehabilitation target site too.
2. In FHNP area in HUHF30005 the selected sites ("Illetményföldek") were completely destroyed by wild boars which ransacked the area so heavily during last year that the reconstruction of the site would be very costly and very time consuming (**Annex C4/1**).

#### **Modifications:**

1. In case of reconstruction of *S. citellus* habitats by KNPD since the planned land purchase has to be changed (refer to B1) therefore the habitat reconstruction will be done on the finally purchased land (**Annex B1/1**).
2. Instead of leasing lands (B2) land use contracts were prepared and some already has signed to create "stepping stones" among Natura 2000 sites (**Annex B2/1**).

3. The rehabilitation of “Illetményföldek” HUHF30005 may give up and the planned *S.citellus* repatriation will be done in a new place (See in Action C5).

**Action C5:**

**Name of the action:** Reintroduction of *S. citellus* to reconstructed areas

**Proposed start and end of the action:** April 2016 – September 2018

**Expected results:** Such interventions will enrich the food supply of local breeding pairs of *A. heliaca* and *F. cherrug* in a region where their population is expected to grow and where they mostly predate small game. Reduction in the predation on game animals would make it easier to incorporate local hunters to our conservation efforts. We expect a general increase of *S. citellus* habitat especially in regions where *A. heliaca* and *F. cherrug* feed. Buffer zones with special water management would reduce the impact of catastrophic events like flooding.

Due to repatriation, the number of colonies and their density will increase. Such changes will positively affect the breeding success of raptors. Based on previous similar actions when half of the introduced animals survived and integrated to the local population, we expect similar outcome after the planned action. Therefore it is foreseen that about in 28 locations which were inhabited sometimes in the past the *S. citellus* population will be restored.

**Achievements:** Potential sites are checked and unsuitable were replaced.

**Action status:** ongoing

| Measure  | Deadline   | Progress |
|--|------------|----------|
| <ul style="list-style-type: none"> <li>20 established <i>S. citellus</i> colonies</li> </ul> | 30.08.2018 | pending  |

**Description of the progress during the reporting time:**

The selected sites for *S. citellus* Reintroduction were checked and some sites may need to be changed. (See in modification bellow.)

**Problems and their impacts:**

Many of the originally selected area for repatriation have to be changed due to different reasons:

1. The target areas were checked first in the frame of A7 action and became evident that some of the selected areas are in a flood hazard area therefore these areas have to be changed. (See bellow in modifications.) (**Annex A7/1**).
2. In case of KNPD since the planned land purchase has to be changed (refer to B1) therefore the habitat reconstruction has to be done on the finally purchased land (**Annex B1/1**).
3. Some area was destroyed either by land owner or by wild boars therefore those must be replaced (**Annexes A7/1 and C4/1**).
4. The Audi Co. the owner of the area is not agreed to reintroduce *S. citellus* to its area Péri Repülőtér HUFH20007.
5. More suitable area was found in ÖNPD area.

**Modifications:**

1. The following sites on flood hazard area has to be changed to safer sites in HUBN10007-HUAN20004 (**Annex A7/1**):  
Göncruszka site has to be cancelled and replaced by **Pere** site.



Hernádbüd site has to be cancelled and replaced by **Bekecs North** site.

In HUKN10008 Kelebia site has to be cancelled since the area will not be purchase due to flood risk.

2. Destroyed areas have to be replaced:

In HUBN10007-HUAN20004 (**Annex A7/1**):

The ploughed Garadna site has to be cancelled and replaced by **Hollóháza** site.

The Onga South site planted with trees has to be cancelled and replaced by **Bekecs South** site.

“Illetményföldek” in HUFH30005 destroyed by wild boars has to be cancelled and replaced by LIFE08NAT/HU/000289 project rehabilitated area in HUFH20009 (**Annex C5/1**).

3. Péri Repülőtér (Pér Airport) may abandon because Audi does not want *S.citellus* in their area. However we will continue the negotiation with them.

4. ÖNPD prefer to replace Csikólegelő in HUON10001 by Kemenessömjén 0237/1 and 0234 areas in HUON20012. The new area is better for *S. citellus*, which was occurring there in the past. The new owner of the area is willing to maintain the area properly for *S. citellus* (**Annex C5/2**).

### **Action C6:**

**Name of the action:** Protection of short term survival and evaluation of long term success of reintroduced and natural prey populations

**Proposed start and end of the action:** July 2017 – September 2018

**Expected results:** Measurably higher success of reintroductions with reduced number of repatriated animals

**Achievements:** No achievements yet.

**Action status:** pending

| Measure                     | Deadline   | Progress |
|-----------------------------|------------|----------|
| • Measurable higher success | 30.09.2018 | pending  |

**Description of the progress during the reporting time:**

**Problems and their impacts:**

**Modifications:**

### **Action C7:**

**Name of the action:** Encouraging hunters to catch predators the competitors of *A. heliaca* and *F. cherrug* around the habitat of *S. citellus*, *C. cricetus*, and *L. europus* by distribution of traps for them.

**Proposed start and end of the action:** April 2015 – September 2018

**Expected results:** Predators’ number in the reintroduction areas will be reduced therefore the reintroduction success will considerably increase.

**Achievements:** No achievements yet.

**Action status:** ongoing

| Measure                  | Deadline   | Progress |
|--------------------------|------------|----------|
| • Procurement of trap    | 31.12.2014 | delayed  |
| • Contracts with hunters | 28.02.2015 | delayed  |
| • Hunters report         | 31.12.2015 | pending  |

**Description of the progress during the reporting time:**

Procurement of traps started.

**Problems and their impacts:**

No

**Modifications:**

No

### **Action C8:**

**Name of the action:** Mapping the movements of *S. citellus*

**Proposed start and end of the action:** October 2014 – March 2018

**Expected results:** New and practical information on the two species that will contribute to prepare and carry out more conservation measures more efficiently.

**Achievements:** No achievements yet.

**Action status:** ongoing

| Measure   | Deadline   | Progress |
|---|------------|----------|
| • Deploying first tags  | 30.06.2015 | pending  |
| • Following the tagged animals & tagging new individuals                  | 31.05.2016 | pending  |
| • Detailed report on the movements and population dynamics of the species | 31.01.2017 | pending  |
| • Follow up of tagged animals   | 31.05.2017 | pending  |

**Description of the progress during the reporting time:**

Studying the alternative tagging methods was going on.

**Problems and their impacts:**

No

**Modifications:**

No

**4.1.4. Action D. Monitoring of the impact of the project actions (obligatory only if there are concrete conservation actions)**

**Action D1:**

**Name of the action:** Monitoring of the impact of the project actions by video record and photo traps in *A. heliaca* and *F. cherrug* nests.

**Proposed start and end of the action:** January 2015 – September 2018

**Expected results:**

Pictures of the photo traps at the nests along the project areas will document the preys used to feed the juveniles. The evaluation of the pictures will confirm the presence and possible increase of the *S. citellus*, *C. cricetus* and *L. europeus* among the preys.

**Achievements:**

- The guideline for video- and photo-trapping was developed and was included in the Project Handbook.
- Pictures are continuously recorded for later evaluation
- On-line video streaming is presented on the website of the project

**Action status:** ongoing

| Measure   | Deadline    | Progress  |
|---|-------------|-----------|
| • Web camera installed  | 28.02.2015. | completed |
| • Photo-traps purchased   | 31.03.2015  | delayed   |
| • Photo-traps installed in <i>F. cherrug</i> nests                | 15.05.2015  | pending   |
| • Photo-traps installed in <i>A. heliaca</i> nests                | 01.06.2015  | pending   |
| • 10 photo-traps, recorded pictures and lists of identified preys | 30.09.2018  | pending   |

**Description of the progress during the reporting time:**

The guideline for video- and photo-trapping was finalized by 15/1/2015 by MME and MADÁRVILÁG and was presented at the training. The guideline was included in the Project Handbook (**Annex F1/3**)

In Hungary at the beginning of 2015 the tendering of the streaming activity had been conducted and the supplier had been selected. The selected supplier has installed the system and the pictures continuously recorded since the *F. cherrug* pair started to breed. Due to some technical errors of the accumulator and the accelerator in the first days the streaming was only functioning during daytime. In a few days the problem was recovered and since then the streaming is continuous. At the moment in the nest targeted by the camera a pair of *F. cherrug* is nesting and incubating 5 eggs. At the end of March the streaming was linked to and can be followed on the website of the project. (**Annex D1/1**).

The purchase of 15 photo-traps by MAVIR and 4 by MME was initiated. The specifications of the equipments have been prepared and the possible suppliers are being searched at the moment.

**Problems and their impacts:**

Pirate users had overtaken the streaming and were using it unauthorized on different sites. Due to this activity the streaming was switched off but the pictures were continuously recorded for evaluation. After some security measures the streaming was restarted.

**Modifications:**

No necessary modifications.

**Action D2:**

**Name of the action:** Monitoring of the impact of the project actions by satellite tagged adult birds

**Proposed start and end of the action:** October 2014 – September 2018

**Expected results:** The land use of the breeding birds can be identified. The impact of the different project action can be justified by the satellite tagged birds.

**Achievements:** The guideline for satellite tagging of adult birds was developed and was included in the Project Handbook

**Action status:** ongoing

| Measure   | Deadline   | Progress |
|---|------------|----------|
| • Transmitters delivered                              | 28.02.2015 | delayed  |
| • Transmitters installed                              | 15.05.2015 | pending  |
| • Data evaluated                                      | 30.09.2015 | pending  |
| • Digital maps with the birds locations on the sites. | 30.09.2018 | pending  |

**Description of the progress during the reporting time:**

The guideline for satellite tagging of adult birds was finalized by 15/1/2015 by MME and MADÁRVILÁG and was presented at the training. The guideline was included in the Project Handbook (**Annex F1/3**)

The purchase of 20 transmitters is ongoing at MAVIR. The specifications of the equipments have been prepared and the possible suppliers are being searched at the moment.

**Problems and their impacts:**

No problem appeared

**Modifications:**

No necessary modifications.

**Action D3:**

**Name of the action:** Monitoring of the project actions

**Proposed start and end of the action:** January 2015 – December 2018

**Expected results:** The project's impact on the target species will be easily monitored by the management team.

**Achievements:** 5 guidelines of the monitoring methodology of the target species were prepared and were included in the Project Handbook.

**Action status:** pending

| Measure  | Deadline                     | Progress |
|--|------------------------------|----------|
| <ul style="list-style-type: none"><li>Annual monitoring report</li></ul> | 31.12.of each year from 2016 | pending  |

**Description of the progress during the reporting time:**

For the monitoring of the impacts the 5 guidelines that were prepared also for the baseline surveys (A1) for each target species will be used to monitor the development of the populations of targeted species with the same tool to provide comparable data. The monitoring actions can only start after the baseline survey had been implemented. The monitoring of the targeted species will start according to the protocols.

**Problems and their impacts:**

No problem

**Modifications:**

No necessary modifications

**Action D4:**

**Name of the action:** Assessment of the social-economic impact

**Proposed start and end of the action:** October 2015 – December 2018

**Expected results:** A study will be prepared and delivered with the Final Report.

**Achievements:** No achievements yet.

**Action status:** pending

| Measure  | Deadline   | Progress |
|--|------------|----------|
| <ul style="list-style-type: none"><li>A study prepared</li></ul> | 31.12.2018 | pending  |

**Description of the progress during the reporting time:**

There was not any scheduled activity during the reporting period.

**Problems and their impacts:**

No problems appeared.

**Modifications:**

No necessary modifications.

**Action D5:**

**Name of the action:** Assessment of ecosystem functions restoration

**Proposed start and end of the action:** October 2015 – December 2018

**Expected results:** A study will be prepared and delivered with the Final Report.

**Achievements:** The manual of the action was prepared by 10/2/2015

**Action status:** pending

| Measure  | Deadline   | Progress |
|--|------------|----------|
| <ul style="list-style-type: none"><li>A study prepared</li></ul> | 31.12.2018 | pending  |

**Description of the progress during the reporting time:**

The guideline of the assessment of ecosystem functions restoration of the project was prepared by NIMFEA and was presented and accepted on the training of project participants (**Annex F3/1**).

**Problems and their impacts:**

No problems appeared.

**Modifications:**

No necessary modifications.

#### 4.1.4. Action E. Public awareness and dissemination of results (obligatory)

##### Action E1:

**Name of the action:** Organising forums for stakeholders

**Proposed start and end of the action:** October 2014 – March 2018

**Expected results:** The awareness of the stakeholders and their tolerance towards the target species will increase. Less conflict will risk these species

**Achievements:** No achievements yet

**Action status:** pending

| Measure  | Deadline   | Progress |
|--|------------|----------|
| <ul style="list-style-type: none"><li>Minutes of the meetings.</li></ul> | 28.02.2018 | pending  |

**Description of the progress during the reporting time:**

**Problems and their impacts:**

No problems appeared

**Modifications:**

Forums will be organised in the 4<sup>th</sup> Q of the year when farmers, hunters have more time for it.

##### Action E2:

**Name of the action:** Production and distribution information materials about the target species, their habitat requirement and management.

**Proposed start and end of the action:** October 2014 – December 2018

**Expected results:** Improved knowledge of the stakeholders will improve the habitat management in favour of the target species

**Achievements:** No achievements yet

**Action status:** **delayed**

| Measure   | Deadline   | Progress       |
|---|------------|----------------|
| <ul style="list-style-type: none"><li>2000 copies of colour brochures, 6000 copies of colouring books, 7000 stickers, 7000 memory cards, 2000 brochures</li></ul> | 31.12.2014 | <b>delayed</b> |

**Description of the progress during the reporting time:**

**Problems and their impacts:**

**Modifications:**

The preparation of the materials (2000 copies of colour brochures, 7000 stickers, 2000 brochures) will start by 01.05.2015 and planned to be ready by 30.06.2015.

The production of the 6.000 copies of colouring books and 7.000 memory cards for children that will be distributed for children visiting the exhibition centres is rescheduled by 30/6/2016 to be ready by the opening of the centres.

**Action E3:**

**Name of the action:** Raising awareness measures to convince the water management bodies to protect habitats by nature friendly water management

**Proposed start and end of the action:** October 2014 – October 2018

**Expected results:** *S. citellus* habitats will be considered and protected from flood water

**Achievements:** No achievements yet

**Action status:** pending

| Measure              | Deadline   | Progress |
|----------------------|------------|----------|
| • Minutes of meeting | 31.12.2016 | pending  |

**Description of the progress during the reporting time:**

**Problems and their impacts:**

No problems appeared

**Modifications:**

BEKE will make connection with the Water Authority in October 2015..

**Action E4:**

**Name of the action:** Producing and displaying “Keep the dog closed” posters

**Proposed start and end of the action:** October 2014 – December 2018

**Expected results:** Less dogs will hunt outside of the settlements

**Achievements:** No achievements yet

**Action status:** delayed

| Measure                         | Deadline   | Progress |
|---------------------------------|------------|----------|
| • 2000 pieces of A2 size poster | 31.12.2014 | delayed  |



**Description of the progress during the reporting time:**

**Problems and their impacts:**

No problems appeared

**Modifications:**

The preparation of the digital layout of the posters will be completed by 30/04/2015. The posters will be printed by 15/5/2015 and will be distributed to the beneficiaries together with the information signboards.

**Action E5:**

**Name of the action:** S. citellus show (Introduction of the target species for the general public)

**Proposed start and end of the action:** October 2014 – October 2015

**Expected results:** Three exhibition centre will be developed and annually at least 100.000 people will learn about the animals and related nature conservation problems and the work of the project

**Achievements:** No achievements yet

**Action status:** in progress

| Measure                                  | Deadline   | Progress |
|--|------------|----------|
| • 6000 copies of B/5 size guide booklets | 31.07.2016 | pending  |
| • Three exhibition centres ready         | 31.07.2016 | pending  |

**Description of the progress during the reporting time:**

The preparation and planning of the exhibition site has begun at BfNPD in order to be able to prepare the necessary procurement procedure (including the procurement in the annual procurement plan of the Directorate) has begun to be able to start the purchase of the necessary equipments and the establishment of the exhibition in 2015.

**Problems and their impacts:**

No problems appeared

**Modifications:**

KAPOSVÁR is planning to use the captive breeding site also to introduce the *S. citellus* for the public especially for the students of the Universit..

**Action E6:**

**Name of the action:** Design and operate project web site

**Proposed start and end of the action:** October 2014 – December 2018

**Expected results:** An accessible and up-to-date web site will inform the general public and technical staff working on similar projects about the project. Hence, it will promote networking with past and future LIFE projects dealing with the conservation of the target species. We expect 20,000 visitors over the project period to visit the site.

**Achievements:** The website of the project has been launched by 10/3/2015 and the *F. cherrug* breeding can be monitored there continuously.

**Action status:** ongoing

| Measure   | Deadline   | Progress  |
|-----------|------------|-----------|
| • webpage | 31.12.2014 | completed |

**Description of the progress during the reporting time:**

The preparation of the project website began by the beginning of the beneficiary responsible for the maintenance, MME, and the project coordinator. The website was launched during the 2<sup>nd</sup> week of March and can be found at the following direct link: <http://sakerlife3.mme.hu>. (**Annex E6/1**). The website was linked to the common website for previous Saker LIFE project as a 3<sup>rd</sup> 'menu point' (<http://www.sakerlife.mme.hu/intro.html>) by 31/3/2015 in order to reach higher publicity by reaching the audience of the two previous well-known projects. (**Annex E6/2**). The site can be reached in three languages (English, Hungarian and Romanian). The streaming of the webcam of Action D1 was linked to the website by 31/3/2015. (**Annex D1/1**). The site is under constant development and the uploading of the content is in progress.

**Problems and their impacts:**

To avoid pirate sites overtaking the streaming a disclaimer had been developed and uploaded to the site together with the streaming. This took some times to finalise by the lawyer of MAVIR therefore the streaming started 2 weeks later.

**Modifications:**

No necessary modifications.

**Action E7:**

**Name of the action:** Erecting information signs at project site

**Proposed start and end of the action:** October 2014 – March 2015

**Expected results:** There will be large scale publicity of the project aims and activities and its support by LIFE+.

**Achievements:** The design of the draft layout has been prepared by 31/3/2015

**Action status:** ongoing

| Measure                       | Deadline   | Progress |
|-------------------------------|------------|----------|
| • 23 information boards ready | 31.12.2014 | delayed  |
| • Boards erected              | 31.03.2015 | delayed  |

**Description of the progress during the reporting time:**

The preparation of the signboard is in progress. The subcontractor was selected, and the text of the signboards was prepared. The boards will be bilingual, in Hungary the text will be visible in English/Hungarian, the boards that will be erected in Romania will be English/Romanian. The designing of the layout is in progress, the draft layout has been prepared (**Annex E7/1**). The boards will be prepared in B1 and B2 sizes, depending on the possibilities and suitability of the places of installation. The deciding of the sion regarding the sizes of each boards is in progress.

**Problems and their impacts:**

No problems appeared

**Modifications:**

The design and layout will be finalized by 15/4/2015 and the production of the boards will be completed by 15/5/2015. The boards will be handed over to the Beneficiaries by 31/5/2015 to erect them on the selected sites..

**Action E8:**

**Name of the action:** Secure public support for conservation efforts

**Proposed start and end of the action:** January 2015 – December 2018

**Expected results:**

- 1500 copies of A2 size posters in Hungarian and 300 copies in Romanian languages
- 1000 T-shirts
- 500 copies of DVD in English, Hungarian, and Romanian languages produced, distributed and broadcasted in national channels.

**Achievements:** No achievements yet

**Action status:** pending

| Measure                                | Deadline   | Progress |
|--|------------|----------|
| • 1500 + 300 copies of A2 size posters | 30.09.2015 | pending  |
| • 1000 T-shirts                        | 31.03.2016 | pending  |
| • 500 copies of DVD                    | 01.07.2018 | pending  |

**Description of the progress during the reporting time:**

**Problems and their impacts:**

No problems appeared.

**Modifications:**

No necessary modifications.

### Action E9:

**Name of the action:** Informing media about project's aims, activities and achievements

**Proposed start and end of the action:** June 2014 – December 2018

**Expected results:** The conservation problems and the results of the LIFE project will be brought to the attention of the general public, decision-makers and interest groups. As a result, adequate public support will be attracted to the necessary conservation measures, and information on subsidies available through CAP and the Natura 2000 network will be widely distributed.

- Two Press Conferences will be organised one at the start and one at the end of the project.
- At least two press releases will be circulated annually to local & national newspapers.
- Two articles will be submitted annually to local & national newspapers to magazines for farmers and on the main web sites of relevant hunters associations.
- Two scientific papers will be produced during the project period.
- Two site visits will be organised for the media.

### **Achievements:**

**Action status:** pending

| <b>Measure</b>  | <b>Deadline</b> | <b>Progress</b> |
|---|-----------------|-----------------|
| <ul style="list-style-type: none"><li>• Press releases, articles, scientific papers</li></ul> | 01.10.2014      | completed       |
| <ul style="list-style-type: none"><li>• First Press Conference</li></ul>                      | 01.10.2014      | completed       |

### **Description of the progress during the reporting time:**

#### **In Hungary:**

The first **press conference** was held at 27/3/2015 at the National History Museum in Budapest, together with the announcement of the *S. citellus* as the 'Mammal of The Year' of 2015. The event was organized in cooperation with the MoA and the NHM. (**Annexes E9/1-E9/3**).

A background material was prepared about the project and **press release** was launched by MME and NHM to introduce the project and its aims to the media. (**Annex E9/4**). The national media was represented at the event of and two radio interviews were made with the Project Manager (Oxygen environmental programme of Radio Kossuth and Radio Katolikus).

Three online media published news about it: MTI/Dióhéj Kiadó Kft. (**Annex E9/5**), National Geographic (**Annex E9/6**), and Greenfo (**Annex E9/7**).

The project was presented in the MAVIR magazine also (**Annex E9/8**).

### **Problems and their impacts:**

No problems appeared

### **Modifications:**

No necessary modifications.

**Action E10:**

**Name of the action:** Layman's report

**Proposed start and end of the action:** October 2017 – October 2018

**Expected results:** 4000 copies of 20 pages hard copy report and PDF format on the web in English, Hungarian, and Romanian languages

**Achievements:** No achievements yet

**Action status:** pending

| <b>Measure</b>   | <b>Deadline</b> | <b>Progress</b> |
|--|-----------------|-----------------|
| <ul style="list-style-type: none"><li>• 2000+1000+1000 copies of the Layman's report</li></ul> | 30.08.2018      | pending         |

**Description of the progress during the reporting time:**  
Only in 2018.

**Problems and their impacts:**

No problems

**Modifications:**

No necessary modifications.

#### 4.1.5. Action F. Overall project operation and monitoring of the project progress

Actions F1-F4 is discussed in part 3, Administrative part.

##### Action F5:

Name of the action: Networking

Proposed start and end of the action: June 2014 – December 2018

Expected results: Efficient project implementation due to intensive networking

Achievements: The project has been presented on a Conference.

Action status: ongoing

| Measure   | Deadline   | Progress |
|---|------------|----------|
| <ul style="list-style-type: none"><li>• Reports of visits</li></ul> | 31.12.2015 | pending  |
| <ul style="list-style-type: none"><li>• Memos of meetings</li></ul> | 31.12.2016 | pending  |

##### Description of the progress during the reporting time:

BfNPD participated in the 5<sup>th</sup> European Ground Squirrel Meeting in Rust, Austria on 2-5 October 2014 (**Annex F5/1**) and invited the 7<sup>th</sup> meeting to Hungary to join the International conference of the project in 2018 (F6).

The project was presented at the 13th Nature Conservation Conference (25-27.03.2015) in Túrkeve (**Annex F5/2-F5/3**), where the Project Manager and colleagues of BEKE gave presentation regarding the project. The Project Manager introduced the project and its aims in general (**Annex F5/4**), while BEKE presented “The possibility to monitor *C. cricetus* and the first results (**Annex A1/1**)

##### Problems and their impacts:

No problems appeared

##### Modifications:

No necessary modifications.

#### 4.2. Availability of appropriate licences and authorisations (if relevant; as indicated in the proposal).

##### 4.2.1. Available permissions

At the moment a permission regarding *N. leucodon* for capturing and examining 9 individuals is available until 2016 for two persons from KNPD and FÁNK. The baseline survey and other tasks related to *N. leucodon* will be started by using this permission.

Colleagues from BEKE also have permission from the Environmental Authority for *C. substilis* until 2017. With this permission the baseline survey and other tasks related to the species can be implemented with this permission.

To extend the activities beyond the ending of the permissions, KNDP will apply for to the Environmental Authority by KNPD, regarding *N. leucodon* and FHNPD for *C. substilis*.

BfNPD has permission already for repatriation of *S. citellus*.

##### 4.2.2. Submitted application is in progress.

The MME has submitted a request for permission for its activities regarding on the raptor species including the project activities. They are expecting the permission any day now.

##### 4.2.3. Application in preparation

There will be two different permission submitted to work with *S. citellus*.

An application is prepared and will be submitted recently to get permission for capturing and examining *S.citellus* to be able to implement the genetic study and veterinary examinations for checking the health status of the populations. Upon the results of these surveys it will be possible to know which populations can be involved in the reintroduction and from where and to where to reintroduce the animals. Later on, by 30.11.2015, another request for permission for the reintroduction will be submitted to the authority for the rest of the activities.

FHNPD will be applying for permissions on behalf of the project.

#### 4.3. Envisaged progress until next report.

##### 4.3.1. Revised reporting schedule

It is envisaged that we would be able to submit the first Mid-term Report earlier at the end of this year.

**Table 2: Revised schedule for Activity Reports**

| Type of report   | Original deadline | Revised deadline |
|------------------|-------------------|------------------|
| Inception Report | 31.03.2015.       | .                |
| Mid-term Report  | 30.06.2016.       | 31.12.2015.      |
| Mid-term Report  | 30.06.2017.       |                  |
| Final Report     | 31.12.2018.       |                  |

##### 4.3.2. Deliverables and milestones

In the tables we indicate the delivered one by green colour and the plan for the next period by yellow.

**Table 3: DELIVERABLE PRODUCTS OF THE PROJECT**

| Name of the Deliverable   | Code of the associated action | Deadline   |
|---|-------------------------------|------------|
| Press releases, articles, scientific papers   | E9                            | 23/03/2015 |
| Project Handbook  | F3                            | 06/02/2015 |
| Minutes of project's staff training   | F3                            | 28/02/2015 |
| 2000 copies of colour brochures, 7000 stickers, 2000 brochures  | E2                            | 30/06/2015 |
| 6000 copies of colouring books, 7000 memory cards   | E2                            | 30/06/2016 |
| 2000 pieces of A2 size poster   | E4                            | 30/05/2015 |
| 23 information boards   | E7                            | 30/05/2015 |
| Questionnaire   | A8                            | 31/03/2015 |
| Up to date Reintroduction Protocol  | A6                            | 15/02/2015 |
| webpage   | E6                            | 31/03/2015 |
| Guide line for sample collectors  | C2                            | 31/01/2015 |
| Contracts with hunters  | C7                            | 31/06/2015 |
| Multifunctional equipment   | A9                            | 31/06/2015 |
| Romanian best management guideline  | A4                            | 30/04/2015 |
| Minutes of SCMs   | F2                            | 31.03.2015 |
| Actualized distribution map of <i>S. citellus</i> , <i>C. cricetus</i> , <i>L. europeus</i> in standard digital format. | A1                            | 31.07.2015 |
| 1500 + 300 copies of A2 size posters  | E8                            | 30.09.2015 |
| Genetically map   | A2                            | 31.12.2015 |
| Hunters reports   | C7                            | 31.12.2015 |
| Report  | A8                            | 31.12.2015 |
| Reports of visits   | F5                            | 31.12.2015 |
| <i>S. citellus</i> welfare plan   | A3                            | 31.12.2015 |
| 2 ha farmhouse land   | B1                            | 31.01.2016 |

Legend: 30.05.2015= rescheduled deliverables  
Work plan=Completed  
2000 pieces of A2 size poster=plans for the next phase

**Table 4: MILESTONES OF THE PROJECT**

| Name of the Milestone                         | Code of the associated action | Deadline   |
|---|-------------------------------|------------|
| First Press Conference                        | E9                            | 27/03/2015 |
| Project management contracted                 | F1                            | 12/12/2014 |
| Project staff trained                         | F3                            | 10/02/2015 |
| Boards ready                                  | E7                            | 30/06/2015 |
| First contracts signed                        | (B2) C4                       | 10/03/2015 |
| Procurement of traps:                         | C7                            | 30/04/2015 |
| Tender process complete                       | A9                            | 31/05/2015 |
| Land Stewardship Advisory Service established | A4                            | 30/04/2015 |
| Training for sample collectors                | C2                            | 10/03/2015 |
| Transmitters delivered                        | D2                            | 31/12/2015 |
| Boards erected                                | E7                            | 31/07/2015 |
| Data collection completed                     | A8                            | 31/05/2015 |



|  |        |            |
|--|--------|------------|
| Photo-traps purchased  | D1     | 30/04/2015 |
| SCM  | F2     | 31/03/2015 |
| Photo-traps installed in <i>F. cherrug</i> nests                           | D1     | 15/05/2015 |
| Transmitters installed   | D2     | 15/05/2016 |
| Photo-traps installed in <i>A. heliaca</i> nests                           | D1     | 01/06/2015 |
| Baseline survey accomplished   | A1     | 30/06/2015 |
| Deploying first tags   | C8     | 30/06/2015 |
| Cutting the grass:   | (B2)C4 | 15/07/2015 |
| Habitat suitability analysis   | A1     | 30/07/2015 |
| Trend analysis   | A 1    | 30/07/2015 |
| Planting Alfa alfa by the farmers  | B 2    | 01/08/2015 |
| Data evaluated   | D 2    | 30/09/2015 |
| Survey completed   | A3     | 30/11/2015 |
| Data processing ready  | A 8    | 01/12/2015 |
| Identifying the potential risks of flood on the <i>S.citellus</i> habitat. | A7     | 31/12/2015 |
| Draft management guideline ready   | A5     | 31/12/2015 |
| Source populations of high genetic variability selected                    | C3     | 31/12/2015 |
| New contracts  | C4     | 01/01/2016 |

### 4.3.3. Corrected time table illustrating progress

There were some mistakes in the time table what is corrected.

**Table 5: TIMETABLE**

| Action Number  | 2014 |     |    |  | 2015 |    |     |    | 2016 |    |     |    | 2017 |    |     |    | 2018 |    |     |    |
|--|------|-----|----|--|------|----|-----|----|------|----|-----|----|------|----|-----|----|------|----|-----|----|
|  |      | III | IV |  | I    | II | III | IV | I    | II | III | IV | I    | II | III | IV | I    | II | III | IV |
| <b>A. Preparatory actions, elaboration of management plans and/or action plans :</b> |      |     |    |  |      |    |     |    |      |    |     |    |      |    |     |    |      |    |     |    |
| 1.   |      | ✓   | ✓  |  | ✓    | ✓  | ✓   |    |      |    |     |    |      |    |     |    |      |    |     |    |
| 2.   |      |     | ✓  |  | ✓    | ✓  | ✓   | ✓  |      |    |     |    |      |    |     |    |      |    |     |    |
| 3.   |      |     | ✓  |  | ✓    | ✓  | ✓   | ✓  |      |    |     |    |      |    |     |    |      |    |     |    |
| 4.   |      |     | ✓  |  | ✓    | ✓  | ✓   |    |      |    |     |    |      |    |     |    |      |    |     |    |
| 5.   |      |     | ✓  |  | ✓    | ✓  | ✓   | ✓  | ✓    | ✓  |     |    |      |    |     |    |      |    |     |    |
| 6.   |      | ✓   | ✓  |  | ✓    | ✓  | ✓   |    |      |    |     |    |      |    |     |    |      |    |     |    |
| 7.   |      | ✓   | ✓  |  | ✓    | ✓  | ✓   | ✓  | ✓    | ✓  | ✓   | ✓  |      |    |     |    |      |    |     |    |
| 8.   |      | ✓   | ✓  |  | ✓    | ✓  | ✓   | ✓  |      |    |     |    |      |    |     |    |      |    |     |    |
| 9.   |      | ✓   | ✓  |  | ✓    | ✓  | ✓   |    |      |    |     |    |      |    |     |    |      |    |     |    |
| <b>B. Purchase/lease of land/or compensation payment for use rights</b>              |      |     |    |  |      |    |     |    |      |    |     |    |      |    |     |    |      |    |     |    |
| 1.   |      | ✓   | ✓  |  | ✓    | ✓  | ✓   | ✓  | ✓    |    |     |    |      |    |     |    |      |    |     |    |
| 2.   |      |     | ✓  |  | ✓    | ✓  | ✓   | ✓  | ✓    | ✓  | ✓   | ✓  | ✓    | ✓  | ✓   | ✓  | ✓    | ✓  | ✓   | ✓  |
| <b>C. Concrete conservation actions :</b>  |      |     |    |  |      |    |     |    |      |    |     |    |      |    |     |    |      |    |     |    |
| 1.   |      |     |    |  | ✓    | ✓  | ✓   | ✓  | ✓    | ✓  | ✓   | ✓  | ✓    | ✓  | ✓   | ✓  | ✓    | ✓  | ✓   | ✓  |
| 2.   |      |     | ✓  |  | ✓    | ✓  | ✓   | ✓  | ✓    | ✓  | ✓   | ✓  | ✓    | ✓  | ✓   | ✓  | ✓    | ✓  | ✓   | ✓  |
| 3.   |      |     |    |  | ✓    | ✓  | ✓   | ✓  | ✓    | ✓  | ✓   | ✓  | ✓    | ✓  | ✓   | ✓  | ✓    | ✓  | ✓   | ✓  |
| 4.   |      |     |    |  | ✓    | ✓  | ✓   | ✓  | ✓    | ✓  | ✓   | ✓  | ✓    | ✓  | ✓   | ✓  | ✓    | ✓  | ✓   | ✓  |
| 5.   |      |     |    |  |      |    |     |    | ✓    | ✓  | ✓   | ✓  | ✓    | ✓  | ✓   | ✓  | ✓    | ✓  | ✓   | ✓  |
| 6.   |      |     |    |  |      |    |     |    |      |    |     |    |      | ✓  | ✓   | ✓  | ✓    | ✓  | ✓   | ✓  |
| 7.   |      |     | ✓  |  | ✓    | ✓  | ✓   | ✓  | ✓    | ✓  | ✓   | ✓  | ✓    | ✓  | ✓   | ✓  | ✓    | ✓  | ✓   | ✓  |
| 8.   |      |     | ✓  |  | ✓    | ✓  | ✓   | ✓  | ✓    | ✓  | ✓   | ✓  | ✓    | ✓  | ✓   | ✓  | ✓    | ✓  | ✓   | ✓  |
| <b>D. Public awareness and dissemination of results :</b>                            |      |     |    |  |      |    |     |    |      |    |     |    |      |    |     |    |      |    |     |    |
| 1.   |      |     |    |  | ✓    | ✓  | ✓   | ✓  | ✓    | ✓  | ✓   | ✓  | ✓    | ✓  | ✓   | ✓  | ✓    | ✓  | ✓   | ✓  |
| 2.   |      |     | ✓  |  | ✓    | ✓  | ✓   | ✓  | ✓    | ✓  | ✓   | ✓  | ✓    | ✓  | ✓   | ✓  | ✓    | ✓  | ✓   | ✓  |
| 3.   |      |     |    |  | ✓    | ✓  | ✓   | ✓  | ✓    | ✓  | ✓   | ✓  | ✓    | ✓  | ✓   | ✓  | ✓    | ✓  | ✓   | ✓  |
| 4.   |      |     | ✓  |  | ✓    | ✓  | ✓   | ✓  | ✓    | ✓  | ✓   | ✓  | ✓    | ✓  | ✓   | ✓  | ✓    | ✓  | ✓   | ✓  |
| 5.   |      |     | ✓  |  | ✓    | ✓  | ✓   | ✓  | ✓    | ✓  | ✓   | ✓  | ✓    | ✓  | ✓   | ✓  | ✓    | ✓  | ✓   | ✓  |
| <b>E. Overall project operation and monitoring:</b>                                  |      |     |    |  |      |    |     |    |      |    |     |    |      |    |     |    |      |    |     |    |
| 1.   |      |     | ✓  |  | ✓    | ✓  | ✓   | ✓  | ✓    | ✓  | ✓   | ✓  | ✓    | ✓  | ✓   | ✓  | ✓    | ✓  | ✓   | ✓  |
| 2.   |      |     | ✓  |  | ✓    | ✓  | ✓   | ✓  | ✓    | ✓  | ✓   | ✓  | ✓    | ✓  | ✓   | ✓  | ✓    | ✓  | ✓   | ✓  |
| 3.   |      |     | ✓  |  | ✓    | ✓  | ✓   | ✓  | ✓    | ✓  | ✓   | ✓  | ✓    | ✓  | ✓   | ✓  | ✓    | ✓  | ✓   | ✓  |
| 4.   |      |     | ✓  |  | ✓    | ✓  | ✓   | ✓  | ✓    | ✓  | ✓   | ✓  | ✓    | ✓  | ✓   | ✓  | ✓    | ✓  | ✓   | ✓  |
| 5.   |      |     | ✓  |  | ✓    | ✓  | ✓   |    |      |    |     |    |      |    |     |    |      |    |     |    |
| 6.   |      |     | ✓  |  | ✓    | ✓  | ✓   | ✓  | ✓    | ✓  | ✓   | ✓  | ✓    | ✓  | ✓   | ✓  | ✓    | ✓  | ✓   | ✓  |
| 7.   |      |     | ✓  |  | ✓    | ✓  | ✓   |    |      |    |     |    |      |    |     |    |      |    |     |    |
| 8.   |      |     |    |  | ✓    | ✓  | ✓   | ✓  | ✓    | ✓  | ✓   | ✓  | ✓    | ✓  | ✓   | ✓  | ✓    | ✓  | ✓   | ✓  |
| 9.   |      |     | ✓  |  | ✓    | ✓  | ✓   | ✓  | ✓    | ✓  | ✓   | ✓  | ✓    | ✓  | ✓   | ✓  | ✓    | ✓  | ✓   | ✓  |
| 10.  |      |     |    |  |      |    |     |    |      |    |     |    |      |    |     |    | ✓    | ✓  | ✓   |    |
| <b>F. Overall project operation and monitoring of the project progress:</b>          |      |     |    |  |      |    |     |    |      |    |     |    |      |    |     |    |      |    |     |    |
| 1.   |      |     | ✓  |  | ✓    | ✓  | ✓   | ✓  | ✓    | ✓  | ✓   | ✓  | ✓    | ✓  | ✓   | ✓  | ✓    | ✓  | ✓   | ✓  |

|    |  |  |   |   |   |   |   |   |   |   |   |   |   |   |   |   |   |   |   |   |
|----|--|--|---|---|---|---|---|---|---|---|---|---|---|---|---|---|---|---|---|---|
| 2. |  |  |   |   | ✓ |   |   |   | ✓ |   |   |   | ✓ |   |   |   | ✓ |   |   |   |
| 3. |  |  |   | ✓ | ✓ |   |   |   |   |   |   |   |   |   |   |   |   |   |   |   |
| 4. |  |  |   |   | ✓ | ✓ | ✓ | ✓ | ✓ | ✓ | ✓ | ✓ | ✓ | ✓ | ✓ | ✓ | ✓ | ✓ | ✓ | ✓ |
| 5. |  |  | ✓ | ✓ | ✓ | ✓ | ✓ | ✓ | ✓ | ✓ | ✓ | ✓ | ✓ | ✓ | ✓ | ✓ | ✓ | ✓ | ✓ | ✓ |
| 6. |  |  |   |   |   |   |   |   |   |   |   |   |   |   |   |   | ✓ | ✓ | ✓ | ✓ |

## **5. Financial part**

### **5.1. Putting in place of the accounting system.**

The Coordinating Beneficiary employed a Project Administrator who is responsible about the project financial monitoring. She was putting in place the project's accounting system.

The detailed Work Plan and Budget prepared during the preparation of the project proposal was updated and divided by staff, years and months for 2014 and 2015 for each partners. From the detailed database budget can be filtered according to partners, sites, staff, years and months for 2015. The Work Plan and Budget for each partner was included in the electronic copy of the partners' Project Handbook. If any modification was approved the Project Manager send back the revised version for the partner coordinator. Revision is made by red colour. Project Administrator maintains an extended version of it where she can record the expenditures in some inserted column.

An auditor was selected by the Coordinating Beneficiary in March 2015 and contracting in progress. She regularly will follows up the project financial management consulting with the Project Administrator and time by time with the Project Manager and the Head of the Financial Department of the Beneficiary.

A Financial Guideline was prepared and included in the Project Handbook. During the project training the Project Administrator taught the partners' administrators how to use it.

Partners are sending monthly financial reports to the Project Office. Project Administrator registers and checks it. She is preparing a "list of requested corrections" if she find any mistake or any missing documents. Financial reports are accepted only if all requested corrections are completed and missing documents submitted and accepted. A register is maintained about the status of each partner's monthly financial reports. Associated Beneficiaries get quarterly advance payment. Each partners got a project stamp identical with the partner and they have to stamp all original financial documents before copying.

### **5.2. Continued availability of co financing.**

The co-financing of the Ministry of Agriculture is available and seems to be available in the future too.

5.3. **Costs incurred** (summary by cost category and relevant comments).

**Table 6:** Incurred costs comparing to the original budget figures

| Budget breakdown categories               | Total cost in €  | Costs incurred from the start date to 28.02.2015 in € | % of total costs |
|---|------------------|---|------------------|
| <b>1. Personnel</b>                       | 880 983          | 50 722  | 5,76             |
| <b>2. Travel and subsistence</b>          | 171 887          | 15 698  | 9,13             |
| <b>3. External assistance</b>             | 543 660          | 11 700  | 2,15             |
| <b>4. Durable goods</b>                   |                  |   |                  |
| <b>Infrastructure</b>                     | 108 621          | 0   | 0                |
| <b>Equipment</b>                          | 394 360          | 0   | 0                |
| <b>Prototype</b>                          | 0                | 0   | 0                |
| <b>5. Land purchase / long-term lease</b> | 435 856          | 0   | 0                |
| <b>6. Consumables</b>                     | 172 402          | 0   | 0                |
| <b>7. Other Costs</b>                     | 13 518           | 0   | 0                |
| <b>8. Overheads</b>                       | 159 956          | 5 468   | 3,43             |
| <b>TOTAL</b>                              | <b>2 881 243</b> | <b>83 588</b>   | <b>2,9</b>       |

**Table 7:** Budget breakdown after the foreseen modifications

| Budget breakdown categories               | Total cost according to the Grant Agreement in € | Total cost after modification in € |
|---|--|------------------------------------|
| <b>1. Personnel</b>                       | 880 983  | 916 031                            |
| <b>2. Travel and subsistence</b>          | 171 887  | 201 886                            |
| <b>3. External assistance</b>             | 543 660  | 596 433                            |
| <b>4. Durable goods</b>                   |  |                                    |
| <b>Infrastructure</b>                     | 108 621  | 108 621                            |
| <b>Equipment</b>                          | 394 360  | 409 960                            |
| <b>Prototype</b>                          | 0  | 0                                  |
| <b>5. Land purchase / long-term lease</b> | 435 856  | 290 259                            |
| <b>6. Consumables</b>                     | 172 402  | 175 032                            |
| <b>7. Other Costs</b>                     | 13 518   | 13 518                             |
| <b>8. Overheads</b>                       | 159 956  | 169 503                            |
| <b>TOTAL</b>                              | <b>2 881 243</b>                                 | <b>2 881 243</b>                   |

### **5.3.1. Personnel costs**

Due to the reorganisation of the project management as it is explained in chapter 3, about 96000 € was converted from External assistance to Personnel costs in the Coordinating Beneficiaries budget while about 60000 € Personnel costs was converted to External assistance in MADÁRVILÁG budget to enable to apply more favourable taxing system. It is foreseen that the personnel costs altogether may increase with about 4 %-t. About 6% of it was utilized until the end of February 2015.

### **5.3.2. Travel costs**

About 30000 € External assistance costs would be converted to Travel costs in the Coordinating Beneficiaries budget to cover the travel of the project technical coordinator and project administrator. It is foreseen that the travel costs may almost reach the threshold 30000 €. About 9% of it was utilized until the end of February 2015.

### **5.3.3. External assistance costs**

About 96000 € External assistance costs would be converted to Personnel costs, about 30000 € for Travel costs, about 15600 € to Equipment costs to cover the costs of a car, 2630 € to Consumables to cover the costs of two note books (2000 €) and two Office programs (630 €). All this changes is related to the changes in project management structure. In contrary 60000 € personnel costs should be moved from Personnel costs to External assistance in MADÁRVILÁG budget and about 145 600 € Land purchase costs should be converted to External assistance costs in FHNPB budget. About 2% of it was utilized until the end of February 2015.

**Although the revised total figure of the external assistance costs looks higher then it was planned but we are still within the threshold and even a part of this about 30000 € is not yet labelled and may will reallocated later upon special need. This money is currently spared due to the reorganisation of the project management.**

### **5.3.4. Infrastructure costs**

Any changes are not foreseen.

### **5.3.5. Equipment costs**

About 15600 € would be converted for External assistance costs to Equipment costs to cover the car purchase for the project management.

### **5.3.6. Land purchase costs**

About 145 600 € from B2 action lease of land should be converted to External assistance costs (C4 action) in FHNPB budget. **The remaining about 20000 € is a spared money and may will reallocated later upon special need.**

### **5.3.7. Consumable costs**

The Consumable costs would increase 2630 € from External assistance costs covering the costs of 2 notebooks and two Office programs.

### **5.3.8. Other costs**

Any changes are not foreseen.

### **5.3.9. Overheads**

The overhead is a little bit would increase since costs from Land purchase was transferred to External assistance what increases the base of the 7%. About 3% of it was utilized until the end of February 2015.

| <b>Table 8: Costs by actions</b>   |                       |                     |                  |                             |
|--|-----------------------|---------------------|------------------|-----------------------------|
| <b>Action number and name</b>  | <b>Foreseen costs</b> | <b>Spent so far</b> | <b>Remaining</b> | <b>Projected final cost</b> |
| A1 Baseline surveys of populations of target species for monitoring future trends and impacts of our actions   | 72 188                | 11 549              | 60 639           | 72 188                      |
| A2 Evaluation of the genetic status of the fragmented populations of <i>S. citellus</i>  | 78 709                | 3 366               | 75 643           | 78 709                      |
| A3 Survey of the stress status of <i>S. citellus</i> colonies and its use to develop <i>S. citellus</i> welfare plan   | 44 017                | 1 152               | 42 865           | 44 017                      |
| A4 Set up the Land Stewardship Advisory Service  | 33 363                | 4 070               | 29 293           | 33 363                      |
| A5 Preparing airport's grassland management guideline  | 7 546                 | 207                 | 7 339            | 7 546                       |
| A6 Updating <i>S. citellus</i> Reintroduction Protocol   | 2 176                 | 2 078               | 98               | 2 176                       |
| A7 Evaluation of the water management system on <i>S. citellus</i> habitat and preparing recommendation how to improve it.   | 9 554                 | 0                   | 9 554            | 9 554                       |
| A8 Baseline survey of the public awareness   | 41 071                | 2 027               | 39 044           | 41 071                      |
| A9 Acquisition of equipment (in compliance with public-procurement regulations)  | 197 460               | 0                   | 197 460          | 197 460                     |
| B1 Purchase of land  | 277 101               | 0                   | 277 101          | 277 101                     |
| B2 Lease of land   | 20 453                | 0                   | 0                | 20 453                      |
| C1 Establishing captive breeding program for <i>S. citellus</i> and genebank from captive and natural colonies   | 84 736                | 0                   | 84 736           | 84 736                      |
| C2 Establishing veterinarian surveillance of potential food sources of <i>A. heliaca</i> and <i>F. cherrug</i> i.e. <i>S. citellus</i> , <i>C. cricetus</i> , <i>N. superspecies leucodon</i> and <i>L. europeus</i> | 41 977                | 0                   | 41 977           | 41 977                      |
| C3 Improving the genetic status of target populations by planned introductions of animals of known allelic composition   | 22 136                | 0                   | 22 136           | 22 136                      |
| C4 Habitat reconstruction to improve the carrying capacity for prey species  | 355 256               | 955                 | 304 301          | 305 256                     |
| C5 Reintroduction of <i>S. citellus</i> to reconstructed areas   | 72 170                | 0                   | 72 170           | 72 170                      |



| Action number and name  | Foreseen costs | Spent so far | Remaining | Projected final cost |
|---|----------------|--------------|-----------|----------------------|
| C6 Protection of short term survival and evaluation of long term success of reintroduced and natural prey populations   | 28 292         | 0            | 28 292    | 28 292               |
| C7 Encouraging hunters to catch predators the competitors of A. heliaca and F. cherrug around the habitat of S. citellus, C. cricetus, and L. europeus by distribution of traps for them. | 61 937         | 137          | 61 800    | 61 937               |
| C8 Mapping the movements of S. citellus   | 88 818         | 0            | 88 818    | 88 818               |
| D1 Monitoring of the impact of the project actions by video record and photo traps in A. heliaca and F. cherrug nests.  | 152 303        | 5 952        | 146 351   | 152 303              |
| D2 Monitoring of the impact of the project actions by satellite tagged adult birds  | 136 465        | 5 208        | 131 257   | 136 465              |
| D3 Monitoring of the project actions  | 38 615         | 277          | 38 338    | 38 615               |
| D4 Assessment of the social-economic impact   | 5 806          | 0            | 5 806     | 5 806                |
| D5 Assessment of ecosystem functions restoration  | 5 922          | 0            | 5 922     | 5 922                |
| E1 Organising forums for stakeholders   | 21 156         | 0            | 21 156    | 21 156               |
| E2 Production and distribution information materials about the target species, their habitat requirement and management.  | 35 462         | 752          | 34 710    | 35 462               |
| E3 Raising awareness measures to convince the water management bodies to protect habitats by nature friendly water management.  | 2 924          | 0            | 2 924     | 2 924                |
| E4 Producing and displaying “Keep the dog closed” posters   | 11 182         | 0            | 11 182    | 11 182               |
| E5 S. citellus show (Introduction of the target species for the general public)   | 130 331        | 0            | 130 331   | 130 331              |
| E6 Design and operate project web site  | 43 261         | 4 083        | 39 178    | 43 261               |
| E7 Erecting information signs at project site   | 18 628         | 918          | 17 710    | 18 628               |
| E8 Secure public support for conservation efforts   | 42 470         | 0            | 42 470    | 42 470               |
| Action number and name  | Foreseen       | Spent so far | Remaining | Projected final      |

|   | costs     |        | cost      |           |
|---|-----------|--------|-----------|-----------|
| E9 Informing media about project's aims, activities and achievements                      | 900       | 0      | 900       | 900       |
| E10 Layman's report   | 16 892    | 0      | 16 892    | 16 892    |
| F1 Project management   | 497 804   | 27 228 | 470 371   | 497 599   |
| F2 Held Steering Committee meetings   | 10 564    | 1 725  | 8 839     | 10 564    |
| F3 Training of project staff  | 5 684     | 5 889  | 0         | 5 889     |
| F4 Independent financial audit  | 10 345    | 0      | 10 345    | 10 345    |
| F5 Networking   | 40 771    | 547    | 40 224    | 40 771    |
| F6 : International conference to share and evaluate results and experience of the project | 4 842     | 0      | 4 842     | 4 842     |
| F7 After Life Conservation Plan   | 0         | 0      | 0         | 0         |
| Overheads   | 169 503   | 5 468  | 164 035   | 169 503   |
| <b>TOTAL</b>  | 2 881 243 | 83 588 | 2 797 655 | 2 881 243 |

## 6. Annexes

### 6.1. Partnership agreements

- Annex 7.1/1 BEKE
- Annex 7.1/2 BfNPD
- Annex 7.1/3 EPASM
- Annex 7.1/4 FANK
- Annex 7.1/5 KAPOSVAR
- Annex 7.1/6 KNPD
- Annex 7.1/7 MADÁRVILÁG
- Annex 7.1/8 MAVIR
- Annex 7.1/9 MILVUS
- Annex 7.1/10 MME
- Annex 7.1/11 NIMFEA
- Annex 7.1/12 ÖNPD
- Annex 7.1/13 Modification of PA with NIMFEA

#### 6.1.1. Financial Amendments

- Annex 7.1/14 BEKE
- Annex 7.1/15 KNPD
- Annex 7.1/16 MAVIR
- Annex 7.1/17 MME
- Annex 7.1/18 NIMFEA

### 6.2. Deliverables (if relevant, e.g. management plans)

- Annex A6/1 Up to date *S. citellus* reintroduction protocol
- Annex A8/2 Questionnaires
- Annex E6/1 The project webpage <http://sakerlife3.mme.hu>
- Annex E6/2 The common website for *F. cherrug* projects  
<http://www.sakerlife.mme.hu>
- Annex E9/1 Invitation for Press Conference
- Annex E9/2 Presentation of the Project Manager in the Press Conference
- Annex E9/3 Photos from the Press Conference
- Annex E9/4 Press Release about the EU supported project
- Annex E9/5 MTI/Dióhéj Kiadó Kft. news about the project
- Annex E9/6 National Geographic news about the project
- Annex E9/7 Greenfo news about the project
- Annex E9/8 Article in MAVIR Magazine about the project
- Annex F2/7 Minutes of SCM
- Annex F3/1 Project Handbook
- Annex F3/2 Minutes of the Project Staff Training

### 6.3. Maps, drawings, technical designs, technical memos etc. as appropriate.

- Annex 3.3.3. EPASM letter about lack of own contribution.
- Annex A1/1 Dr. T. Cserkész at al. Possibilities to monitor *C. cricetus* and the first monitoring results
- Annex A2/1 List of potential *S. citellus* colonies for genetically sampling
- Annex A7/1 Recommendation for changing the selected sites
- Annex B1/1 Map of the modified area for land purchase in HUKN10008
- Annex B1/2 Proof of land reorganisation
- Annex B1/3 Land register certificate of 0100/85
- Annex B1/4 Notes of the responsible ranger of KNPD

Annex B1/5 Land register certificate of 0100/59  
 Annex B2/1 Contract for land management  
 Annex C4/1 Memo about the destroyed area by wild boars  
 Annex C5/1 Map of replacement area  
 Annex C5/2 Map of the changed are in ÖNPD area  
 Annex D1/1 Web camera recorded the picture when *F.cherrug* occupying the nest box  
 Annex E7/1 Draft design of the signboards  
 Annex F1/1 Minutes of the initial project meeting in Budapest Zoo on 12.09.2015  
 Annex F1/2 The Technical Coordinator's presentation on the Kick of Meeting in Budapest on 11 November 2015  
 Annex F2/1 Invitation for Steering Committee meeting  
 Annex F2/2 Programme of the SCM  
 Annex F2/3 ToR of SC  
 Annex F2/4 Introduction of the by the Project Manager  
 Annex F2/5 Project Coordinator's presentation  
 Annex F2/6 Problems and work plan for 2015 by the PM  
 Annex F4/1 Selection of auditor  
 Annex F5/1 The Adv. of 5<sup>th</sup> Ground Squirrel Meeting  
 Annex F5/2 Programme of the 13<sup>th</sup> Nature Conservation Conference in Túrkeve  
 Annex F5/3 Photos of the Conference  
 Annex F5/4 Presentation of the Project Manager about the project

#### **6.4. Output indicators. Definition.**

Annex 7.4

#### **6.5. Other**